

GoldenEar's Aon Series "Reinvents the Bookshelf Speaker!"

— Steve Guttenberg, *CNET The Audiophile*

*"A brilliant little bookshelf monitor that...if heard in the dark,
could plausibly pass for a multi-thousand-dollar model"*

— Chris Martens, *The Absolute Sound*



Aon 3



Aon 2

Some of GoldenEar's Extraordinary Series of Awards:



Aon 2 and Aon 3 Ultra-High-Performance Compact Bookshelf Monitors

The Aon 2 and 3 are exceptionally compact, ultra-high-performance bookshelf speakers that were originally developed for use as near-field monitors in professional mixing applications. The design goal was to produce modestly-sized shelf or stand-mountable speakers that would achieve accurate high-definition sonic reproduction, with superb three-dimensional imaging, comparable to that achieved by GoldenEar's award-winning Triton Two Towers. Although they don't have quite the awe-inspiring bass of the floor-standing Tritons, great care has been taken, and extensive technology has been incorporated, to ensure that the Aons can deliver a remarkably satisfying listening experience without the need for a separate subwoofer.

Both Aon models incorporate GoldenEar-designed cast-basket bass/midrange drivers with technology derived from the midrange units developed for the Tritons. In addition, they both use the same extraordinary and costly High Velocity Folded Ribbon (HVFR™) high-frequency radiator used in the Tritons. Lastly, each Aon model utilizes two side-mounted planar low-frequency radiators in a dynamically balanced configuration in order to properly load the bass/midrange drivers for an open, box-less midrange, while also contributing to the Aons' remarkably extended bass for such small enclosures.



Aon 2

Aon 3

“Breathtaking...superior in every way”

— Steve Guttenberg, *CNET The Audiophile*

The Aons are of a truncated pyramidal construction, which results in significant performance advantages due to the non-parallel cabinet walls and the reduced baffle area around the tweeter. Aesthetically, the sleek, attractive pyramid-inspired shape combined with appealing design details including piano-gloss black end-caps, results in beautiful speakers that are both elegant and distinctive.

“...a stunning achievement...I continue to be floored...”

— Robert Reina, *Stereophile*

“nothing short of a miracle” — Jeff Dorgay, *Tone Audio*

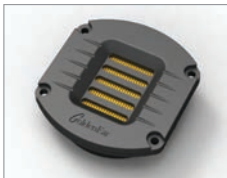
AON 2 SPECIFICATIONS

Dimensions: 8" W x 10" D x 12" H. **Frequency Response:** 42 Hz – 35 kHz. **Sensitivity:** 89 dB. **Nominal Impedance:** Compatible with 8 ohms. **Driver Complement:** One 6" cast-basket bass/midrange driver, One High-Velocity Folded Ribbon (HVFR™) high-frequency radiator, Two 6-1/2" side-mounted planar low-frequency radiators. **Rec. Amp:** 10 – 200 Watt/channel.

AON 3 SPECIFICATIONS

Dimensions: 9" W x 11" D x 14" H. **Frequency Response:** 38 Hz – 35 kHz. **Sensitivity:** 90 dB. **Nominal Impedance:** Compatible with 8 ohms. **Driver Complement:** One 7" cast-basket bass/midrange driver, One High-Velocity Folded Ribbon (HVFR™) high-frequency radiator, Two 8" side-mounted planar low-frequency radiators. **Rec. Amp:** 10 – 250 Watt/channel.

State-of-the-Art GoldenEar Drivers



High-Velocity Folded Ribbon Tweeter (HVFR™)

- Tweeter Diaphragm is a High Temperature Film
- High-Power Neodymium Magnets
- Squeezes/Pressurizes Air Instead of Pushing It
- Greater Control, Smoother More Extended Response
- Vanishingly Low Distortion
- Dramatically Improved Dynamic Range and Detail
- Superb Dispersion Characteristics
- Superior Impedance Match to Air



High-Definition Cast-Basket Bass/Midrange Drivers

- GoldenEar Multi-Vaned Phase Plug (MVPP) Design
- Rigid Free-Flow Cast-Basket Chassis
- Proprietary Computer Optimized Cone Topology
- High-Gauss Magnet Assembly
- 1" High-Temperature Kapton Former Voice Coil
- Extremely Extended Resonant-Free Linear Frequency Response Characteristics



Infrasonic Planar Sub-Bass Radiator

- Pressure-Coupled Loading Extends Usable Bass Performance to the Infrasonic Region
- Performs Like a Well-Tuned Transmission Line but with Superior Transient Performance and Control



Recommended System Components

GoldenEar Technology has engineered and voiced all of our speakers to perfectly complement and match each other in order to give you the greatest flexibility in creating your system.

CENTER CHANNELS

SuperCenter X, SuperCenter XL, SuperSat® 3C, SuperSat® 50C, SuperSat® 60C

SURROUNDS

Aon 2, Aon 3, SuperSat® 3, SuperSat® 50, SuperSat® 60, Invisa® 525, Invisa® 650, Invisa® HTR 7000, Invisa® MPX MultiPolar

SUBWOOFERS

ForceField 3, ForceField 4, ForceField 5

Follow us on: [facebook.com/goldenear](https://www.facebook.com/goldenear) & twitter.com/goldeneartech

© GoldenEar Technology. All right reserved.

Reproduction in whole or in part without our express permission is prohibited.

GoldenEar Technology®
A Passion for Sonic Perfection™

www.goldenear.com

PO Box 141, Stevenson, MD 21153 • (410) 998-9134

For more info on other GoldenEar products:

