

GoldenEar's New Second Generation Triton Two+ and Triton Three+ Towers

"I must agree that both models displayed the Triton One pedigree that has won over music lovers around the globe." – Jim Clements, *Secrets*

GoldenEar's Triton Towers have set the audio world on its proverbial ear with extraordinary sound quality, elegant styling and unequalled value. They have earned an incredible series of awards and honors all around the world. Tritons are the latest signature creation of Sandy Gross, whose award winning loudspeakers have been impressing and delighting reviewers and listeners for over 40 years. Incorporating cutting-edge technologies like High Velocity Folded Ribbon tweeters, advanced technology drivers with our highly evolved and sophisticated bass-loading technology, linear-phase fully balanced crossover networks and inertially-balanced quadratic planar infrasonic radiators, they are, in the words of Stereophile's Robert Deutsch, *"the holy grail of audio that we all seek."* Tritons will absolutely bring all your music and movies to life!

"Both models could move and handle like European race cars ... the Two+ and Three+ played faster—with greater detail, presence and agility. They shed more light on the music ... Two impressive high-end loudspeakers at a very comfortable price."

– Herb Reichert, *Stereophile*

Now, GoldenEar is pleased and proud to announce the second generation Triton Two and Three, the **Triton Two+** and **Triton Three+**, which incorporate many of the new technologies and refinements developed for the One, along with the successful application of all of the additional experience that we have gained over the years and in the process. As we focused on the major development project to bring the original Triton Two and Triton Three up to Triton One's sonic standards, this is the path that we took: examining the myriad of details, some very significant and some less so, in order to optimize as many as possible to bring us to our lofty goal. Simply put, listening will clearly and instantly reveal how well we have succeeded. Initial listening by noted critics and important reviewers has been exceedingly positive, and the consistent response has been surprise and shock at just how closely the sonic character and voicing of the new speakers approaches that of the Triton One.



Triton Two+ Tower

Triton Three+ Tower

THE CUTTING-EDGE TECHNOLOGY BEHIND THE TRITON TWO+ AND TRITON THREE+

Two 4.5" High-Definiton Bass/Midrange Drivers

Open-Cell Polyurethane Foam Damping Pads

High-Velocity Folded Ribbon Tweeter (HVFR™)

Optimized Dual-Chamber Upper Bass/Midrange Enclosure

Linear-Phase Fully Balanced Crossover Network

Two 5" x 9" Quadratic Sub-Bass Drivers

1200-Watt DSP-Controlled Class D Digital Amplifier

Dual Inertially-Balanced Quadratic Planar Infrasonic Radiators
On Either Side of Cabinet

Triton Two+ Tower

4.5" High-Definiton Bass/Midrange Drivers

Optimized Chamber Upper Bass/Midrange Enclosure

High-Velocity Folded Ribbon Tweeter (HVFR™)

Linear-Phase Fully Balanced Crossover Network

5" x 9" Quadratic Sub-Bass Driver

800-Watt DSP-Controlled Class D Digital Amplifier

Dual Inertially-Balanced Quadratic Planar Infrasonic Radiators
On Either Side of Cabinet

Triton Three+ Tower

SOME OF GOLDENEAR'S EXTRAORDINARY SERIES OF AWARDS



TRITON TWO+ TOWER WITH BUILT-IN 1200-WATT POWERED SUBWOOFER

The Triton Two+ Tower is a remarkable, award-winning high-performance loudspeaker with a built-in powered subwoofer. It is designed for superb performance in both high quality two channel stereo systems as well as in multi-channel home theater and music systems when paired with any of our perfectly matched center channels and surrounds. Its sleek, elegantly curved and tapered design is important from both a styling and a performance perspective. It has a gorgeous piano black finish and its compelling cutting-edge silhouette speaks for itself. Additionally, the very narrow front baffle contributes significantly to the Triton Two+'s exceptional 3D imaging capability.

Cutting-edge technology is synergistically combined to deliver the extraordinary sound quality of the Tritons, which can be a revelation. Their dynamic, effortless, you-are-there clarity will almost literally put the live performance or action right into your home, or conversely, put you into the concert hall or the live action on the screen. The built-in powered subwoofer section of the Triton Two+ incorporates a fully-balanced GoldenEar designed 1200-Watt DSP controlled digital amp. It drives two front-mounted quadratic 5" x 9" long-throw subwoofer bass drivers which are coupled to two side-mounted quadratic 7" x 10" planar infrasonic radiators. The amp has a Programmable Logic Device (PLD) based state machine with a nearly instantaneous 278nS update time to perfectly manage a myriad of functions including soft-clipping, DC offset control, output-stage anti-saturation protection and discrete multi-band limiting. Intrinsic THD is extremely low so very little negative feedback is required thus ensuring optimum transient performance.

"I was struck with how well integrated the sound was from top to bottom ... with some whomping bass." — Roger Kanno, *SoundStage!* on the Triton Two+

There are two 4.5" GoldenEar-designed cast-basket high-definition bass/midrange drivers which are arrayed in a D'Appolito configuration around the tweeter. The drivers incorporate a unique Multi-Vaned Phase Plug (MVPP™) as well as a proprietary computer optimized cone topology which helps them to achieve smooth linear response extending beyond 20 kHz. Even though they are crossed over at 3.5 kHz, the extended bandwidth and smooth resonant-free response well beyond their crossover point helps them to achieve near ideal performance in the range in which they are utilized. The extraordinary high frequency driver is a proprietary High Velocity Folded Ribbon (HVFR™) design. The tweeter diaphragm is a high temperature film, which is folded like an accordion and positioned within an intense neodymium magnetic field. Unlike more conventional dome or ribbon tweeters which push the air, the HVFR develops higher pressure and velocity by squeezing the air out between the pleats of the diaphragm. The result is better impedance matching to the air in the room with greater control, smoother more extended response and dramatically improved dynamic range.

The advantages of building the subwoofers into the Tritons are many. First, of course, this eliminates the need for additional bulky subwoofer boxes in the room. But more important are the

performance advantages. First, by engineering the subwoofer as an integral part to the speaker, we get far superior integration and blending than can be achieved with separate subwoofers, even when using two. The two subwoofers in a pair of Tritons couple better to the air in the room, helping to better deal with the room's eigenmodes and smooth out response. Of course, the dual subwoofers are also intrinsically more powerful and couple together synergistically for more truly exceptional bass. Hookup is as simple as just speaker wire, and there is a separate LFE input if desired.

TRITON THREE+ TOWER WITH BUILT-IN 800-WATT POWERED SUBWOOFER

Like the Two+, the Triton Three+ incorporates the built-in powered subwoofer technology first pioneered by GoldenEar principals Sandy Gross and Don Givogue. In this case, there is an integral 800-Watt digital/DSP controlled power amp driving an active front-mounted long-throw 5" x 9" quadratic subwoofer driver. This is coupled to two opposing, inertially balanced 6.75" x 8" quadratic planar infrasonic passive radiators which are located on the sides, near the floor, in order to take full advantage of boundary coupling. There is one of the same 4.5" high-definition cast basket MVPP™ drivers as used in the Two, along with the same GoldenEar signature High Velocity Folded Ribbon (HVFR™) tweeter.

Performance-wise, the Triton Three+ delivers the same boxless three-dimensional imaging as the Triton Two+, which reviewers have hailed as "mystical," "magical" — and, best summed up by the dramatic reviewer's rave, "had us believing that the entire surface of the front wall was covered with speakers." Likewise, the powerful, deep subwoofer bass blends perfectly with the silky smooth, utterly transparent midrange and high frequencies, putting many dramatically more expensive speakers to shame.

"GoldenEar has now given you a big taste of Triton One-like performance in its new Triton + Series models."

— Chris Martens, *HiFi+*

TRITON TWO+ SPECIFICATIONS:

Dimensions: Speaker: 5-1/4" W (front) x 7-1/2" W (rear) x 15" D x 48" H (height with base installed, no spikes). Base: 11-1/2" W x 18" D. **Frequency Response:** 16 Hz – 35 kHz. **Efficiency:** 91 dB. **Nominal Impedance:** Compatible with 8 ohms. **Driver Complement:** Two 5" x 9" long-throw quadratic subwoofer bass drivers, coupled to Two 7" x 10" quadratic planar infrasonic radiators, Two 4-1/2" high-definition cast-basket MVPP™ upper-bass/mid drivers, One High-Velocity Folded Ribbon (HVFR™) Tweeter. **Rec. Amp:** 20 – 500 watt/channel. **Built-In Subwoofer Power Amplification:** 1200 watt ForceField Amplifier.

TRITON THREE+ SPECIFICATIONS:

Dimensions: Speaker: 5-1/4" W (front) x 7" W (rear) x 13" D x 44" H (height with base installed, no spikes). Base: 11-1/2" W x 16-1/4" D. **Frequency Response:** 21 Hz – 35 kHz. **Efficiency:** 90 dB. **Nominal Impedance:** Compatible with 8 ohms. **Driver Complement:** One 5" x 9" long-throw quadratic subwoofer bass driver, coupled to Two 6-3/4" x 8" quadratic planar infrasonic radiators, One 4-1/2" high-definition cast-basket MVPP™ upper-bass/mid driver, One High-Velocity Folded Ribbon (HVFR™) Tweeter. **Rec. Amp:** 20 – 400 watt/channel. **Built-In Subwoofer Power Amplification:** 800 watt ForceField Amplifier.

**Specifications are subject to change without notice.*

TRITON TWO+ AND TRITON THREE+ RECOMMENDED SYSTEM COMPONENTS



GoldenEar TritonCinema systems consist of a pair of Triton Towers, a SuperSat or SuperCenter center channel and two or more SuperSats, Aons or Invisas used as surrounds. Some advanced systems use Triton Towers as surrounds. Also, if desired, you can certainly add additional subwoofers, although the Tritons built-in subs are more than adequate for most installations. Remember, GoldenEar engineers voice all of our speakers to the same high standards, so you can mix and match and always achieve perfect results. GoldenEar Technology has engineered and voiced all of our speakers to perfectly complement and match each other in order to give you the greatest flexibility in creating your system.

CENTER CHANNELS

SuperCenter X, SuperCenter XL, SuperCenter Reference, SuperSat® 50C, SuperSat® 60C

SURROUNDS

Aon 2, Aon 3, SuperSat® 3, SuperSat® 50, SuperSat® 60, Invisa® 525, Invisa® 650, Invisa® HTR 7000, Invisa® MPX MultiPolar

HEIGHT CHANNELS

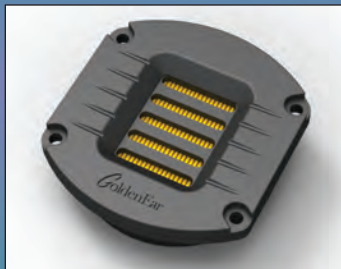
Invisa® 525, Invisa® 650, Invisa® HTR 7000



THE TRITONS HAVE TRIUMPHED!

- 2016 Editors' Choice: *The Absolute Sound*
- Affordable Floorstanding Speaker of the Year: *HomeTheaterReview*
- Affordable Loudspeaker of the Year: *The Absolute Sound*
- Audio Product of the Year: *Sound & Vision*
- Best of 2014: *HomeTheaterReview*
- Best of 2014: *Secrets of Home Theater & High Fidelity*
- Best Sound for the Money CES 2014: *The Absolute Sound*
- Editor's Choice Greatest Overachiever: *The Perfect Vision*
- Product of the Year: *Electronic House*
- Product of the Year 2014: *The Absolute Sound*
- Recommended Component: *Stereophile*
- Speaker of the Year: *What HiFi?*
- Top Pick of the Year: *Home Theater Magazine*
- Top Pick of the Year: *Sound & Vision*
- Best New Product CEDIA 2013: *CEPro*

STATE-OF-THE-ART GOLDENEAR TECHNOLOGY DRIVERS



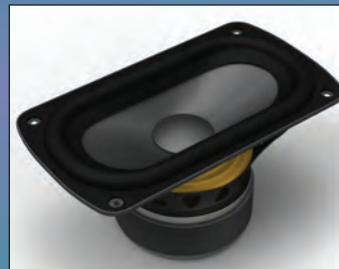
HIGH-VELOCITY FOLDED RIBBON TWEETER (HVFR)

- Tweeter Diaphragm is a High Temperature Film
- High-Power Neodymium Magnets
- Squeezes/Pressurizes Air Instead of Pushing It
- Greater Control, Smoother More Extended Response
- Vanishingly Low Distortion
- Dramatically Improved Dynamic Range and Detail
- Superb Dispersion Characteristics
- Superior Impedance Match to Air



4.5" HIGH-DEFINITION BASS/MIDRANGE DRIVER

- GoldenEar Multi-Vaned Phase Plug (MVPP) Design
- Rigid Free-Flow Cast-Basket Chassis
- Proprietary Computer Optimized Cone Topology
- High-Gauss Magnet Assembly
- 1" High-Temperature Kapton Former Voice Coil
- Extremely Extended Resonant-Free Linear Frequency Response Characteristics



5" X 9" QUADRATIC SUB-BASS DRIVER

- Ultra-Long Throw
- Glass Fiber and Nomex® Composite Cone
- Huge, High-Gauss Magnet Assembly
- 1.5" High-Temperature Aluminum Voice-Coil
- Quadratic Cone Topology for Maximum Cone Surface Optimization



QUADRATIC PLANAR INFRASONIC RADIATOR

- Pressure-Coupled Loading Extends Usable Bass Performance to the Infrasonic Region
- Performs Like a Well-Tuned Transmission Line but with Superior Transient Performance and Control

GoldenEar Technology

www.goldenear.com

PO Box 141, Stevenson, MD 21153 (410) 998-9134

© GoldenEar Technology. All right reserved.

Reproduction in whole or in part without our express permission is prohibited.

